

SEISA Gear, Ltd.

Head Office
16-1, Wakahama 4-chome, Kaizuka-shi,
Osaka 597-8555, Japan
TEL: (81)-72-431-3021
FAX: (81)-72-431-0846

International Operations
16-1, Wakahama 4-chome, Kaizuka-shi,
Osaka 597-8555, Japan
TEL: (81)-72-439-1151
FAX: (81)-72-431-0846

Factory
16-1, Wakahama 4-chome, Kaizuka-shi,
Osaka 597-8555, Japan
TEL: (81)-72-431-6225
FAX: (81)-72-433-3227

SEISA

Sumitomo Drive Technologies
Always on the Move



Worldwide Sumitomo Network

U.S.A.

Sumitomo Machinery Corporation of America (SMA)
4200 Holland Blvd., Chesapeake, VA 23323, U.S.A.
Tel: (1)757-485-8218
Fax: (1)757-485-7490

Argentina

SM-Cydo de Argentina S.A. (SMAR)
Montes de Oca #6719, (B1606BMG) Munro,
Buenos Aires, Argentina
Tel: (54)11-4765-5332
Fax: (54)11-4765-5517

Brazil

SM-Cydo Redutores do Brasil, Ltda. (SMBR)
Av. Fagundes Filho, 191 Metro Sao Judas
Edificio Houston-Sala H123 Sao Paulo-SP
Brasil 04304-010
Tel: (55)11-5585-3600
Fax: (55)11-5585-9990

Chile

SM-Cydo de Chile, Ltda. (SMCH)
San Pablo Ave, 3507 Quinta Noma, Santiago, Chile
Tel: (56)2-892-7000
Fax: (56)2-892-7001

Mexico

SM-Cydo de Mexico, S.A. de C.V. (SMME)
Calle "C" No. 506A Parque Industrial
Almacento Apodaca, N. L., Mexico 66600
Tel: (52)81-8144-5130
Fax: (52)81-8369-3699

Canada

SM-Cydo of Canada, Ltd. (SMC)
1045 South Service Road West, Oakville, Ontario,
Canada L6L 6K3
Tel: (1)905-469-1050
Fax: (1)905-469-1055

Germany

Sumitomo (SH) Cydo Drive Germany GmbH (SCG)
Cydostraße 92, 85229 Markt Indersdorf, Germany
Tel: (49)8136-66-0
Fax: (49)8136-5771

Austria

SCG Branch Austria Office
Gruentalerstraße 30A, 4020 Linz, Austria
Tel: (43)732-330958
Fax: (43)732-331978

Benelux

SCG Branch Benelux Office
Office Heikneuterlaan 23, 3010 Kessel-Lo/Leuven,
Belgium
Tel: (32)16 60 83 11
Fax: (32)16 57 16 39

France

SM-Cydo France E.U.R.L. (SMFR)
65-75 Avenue Jean Mermoz, Espace Primagaz, 93126
La Courneuve, France
Tel: (33)149-929494
Fax: (33)149-929490

Italy

SM-Cydo Italy Srl (SMIT)
Via dell' Artigianato 23, 20010 Cornaredo (MI), Italy
Tel: (39)02-9356-2121
Fax: (39)02-9356-9893

Spain

SM-Cydo Iberia, S.L. (SMIB)
Edificio Gobelás, C/Landabarri, nº 4 Escalera 1, 2º Izqda,
Leioa 48940 Vizcaya, Spain
Tel: (34)944-805389
Fax: (34)944-801550

Sweden

SM-Cydo Scandinavia AB (SMSC)
Ridbanegatan 4, S-21377 Malmö, Sweden
Tel: (46)40220030
Fax: (46)40220035

UK

SM-Cydo UK Ltd. (SMUK)
Unit 29, Bergen Way, Sutton Fields Industrial Estate,
Kingston upon Hull, HU7 0YQ, East Yorkshire,
United Kingdom
Tel: (44)1482-790340
Fax: (44)1482-790321

China

Sumitomo (SH) Cydo Drive China, Ltd. (SCT)
13 Floor, No. 1698 Yishan Rd, Shanghai, China 201103
Tel: (86)21-3462-7877
Fax: (86)21-3462-7922

Hong Kong

SM-Cydo of Hong Kong Co., Ltd. (SMHK)
Unit 1802, 18/F, Park Building, 476 Castle Peak Road,
Kowloon, Hong Kong
Tel: (852)2460-1881
Fax: (852)2460-1882

Korea

Sumitomo (SH) Cydo Drive Korea, Ltd. (SCK)
Royal Bldg, 9F Rm, 913, 5 Danju-Dong, Chongro-ku,
Seoul, Korea 110-721
Tel: (82)2-730-0151
Fax: (82)2-730-0156

Taiwan

Tatung SM-Cydo Co., Ltd. (TSC)
22 Chungshan N. Road 3rd., Sec. Taipei, Taiwan 104,
R. O. C.
Tel: (886)2-2595-7275
Fax: (886)2-2595-5594

Singapore

Sumitomo (SH) Cydo Drive Asia Pacific Pte. Ltd. (SCA)
15 Kwong Min Road, Singapore 628718
Tel: (65)6591-7800
Fax: (65)6863-4238

Philippines

SCA Branch Office in Philippines
B2b Granville Industrial Complex, Governor's Drive, Bo,
Bancal, Carmona 4116 Cavite, Philippines
Tel: (63)2-6800-6500
Fax: (63)2-6800-6555

Vietnam

SCA Representative Office in Ho Chi Minh
Floor 4, 99 Nguyen Thi Minh Khai Street World Ben Thanh,
District 1, HCM, Vietnam
Tel: (84)8-3925-6504
Fax: (84)8-3925-6505

Malaysia

SM-Cydo (Malaysia) Sdn. Bhd. (SMMA)
No. 2, Jalan BP 4/1, Bandar Bukit Puchong, 47100
Puchong, Selangor Darul Ehsan, Malaysia
Tel: (60)3-8061-2909
Fax: (60)3-8061-3909

Thailand

SM-Cydo (Thailand) Co., Ltd. (SMTH)
195, Empire Tower 21st Fl., Unit 2103-4, South
Sathorn Road, Yannawa Sathorn Bangkok 10120,
Thailand
Tel: (66)2-670-0998
Fax: (66)2-670-0999

Australia

SM-Cydo (Australia) Pty., Ltd. (SMAU)
9 Holbeche Rd, Arndell Park, NSW, 2148, Australia
Tel: (61)2-8811-6555
Fax: (61)2-8811-6500

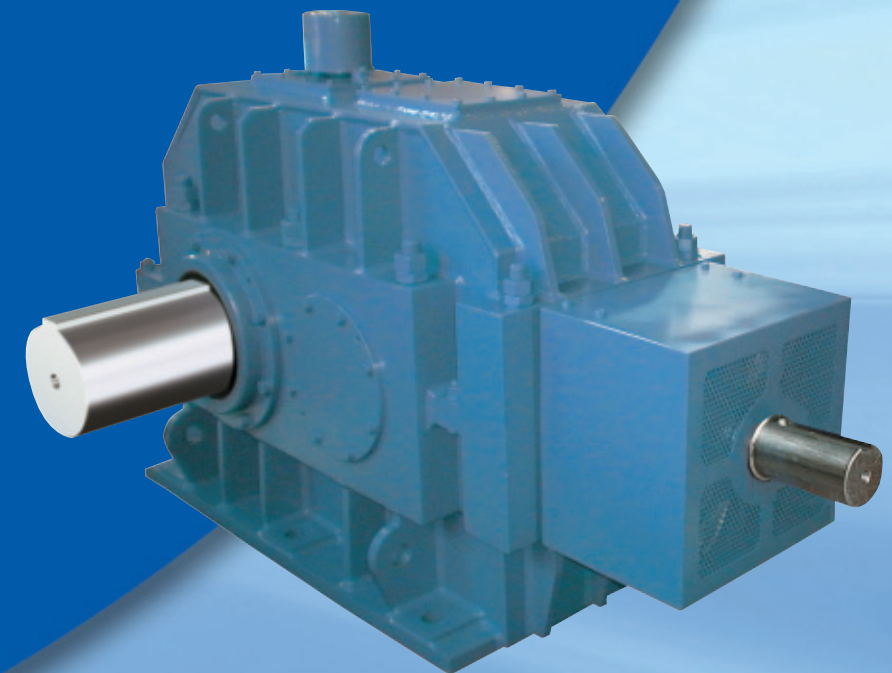
India

Sumi-Cydo Drive India Private Limited
Survey No. 130, Hissa No. 02, Jeevan Nagar Next to
TVS Logistics, Off Mumbai-Bangalore bypass,
Tathawade, Pune-411 033, India
Tel: (91)20-6674-2900
Fax: (91)20-6674-2901

Japan

Sumitomo Heavy Industries, Ltd.
Bancal, Carmona 4116 Cavite, Philippines
Address: ThinkPark Tower, 1-1, Osaki 2-Chome,
Shinagawa-ku, Tokyo 141-6025, Japan
Tel: (81) 3-6737-2511
Fax: (81) 3-6866-5160

SEISA Conveyor Drives- Extra Large Sizes



SEISA Gear, Ltd.

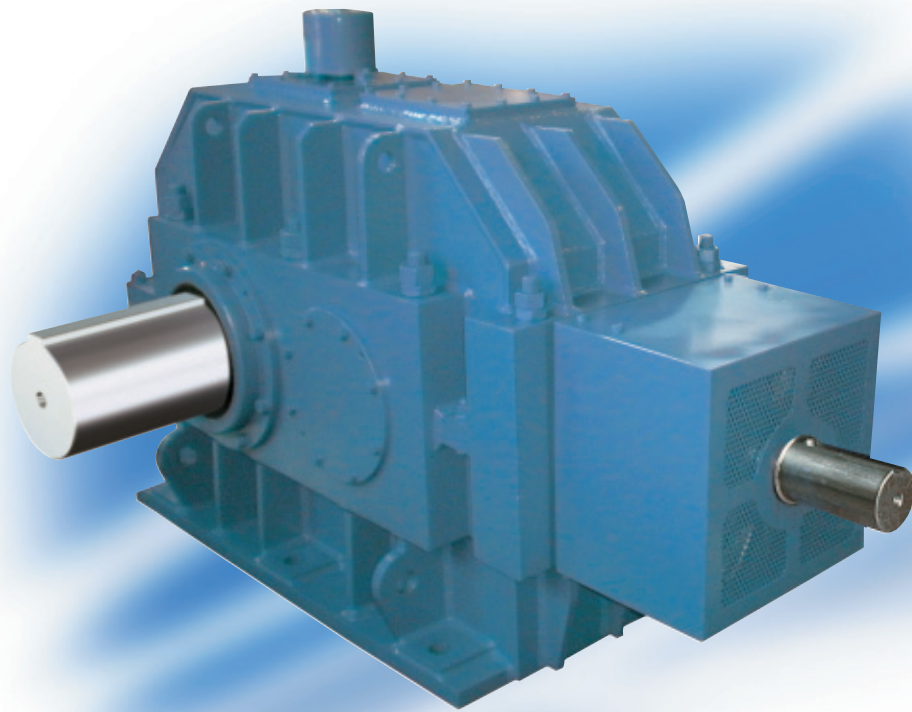
Subsidiary of Sumitomo Heavy Industries, Ltd.

SEISA Conveyor Drives - Extra Large Sizes

Material handling applications place heavy demands on power transmission equipment. Tough operating conditions, high shock loads, dust, moisture, and caustic environments take a huge toll on the equipment that keeps your product moving.

Your power transmission equipment must be tough, reliable, and efficient. Power and performance are not optional. For those reasons, you rely on Sumitomo Drive Technologies for your power transmission needs.

Recognized as a global leader in power transmission innovation, the unmatched strength of our product range, application experience, and global presence has established Sumitomo Drive Technologies as the premier power transmission provider.



Features

Stronger Teeth

We use 25 degree pressure angle teeth on all of our gearing. In comparison with our competitor's 20 degree pressure angle teeth, the 25 degree pressure angle forms a thicker tooth root and provides higher load capacity to withstand heavier shock loads.

Longer Bearing Life

Our bearings have been selected to provide L10 lives in excess of 60,000 hours (with 1.50 mechanical service factor).

Increased Cooling Performance

Your desired operating temperature will be maintained by selection of the appropriate cooling method including shaft-driven or electric cooling fans, water-cooled coils, or convective housing fins.

Wide Accessory Range

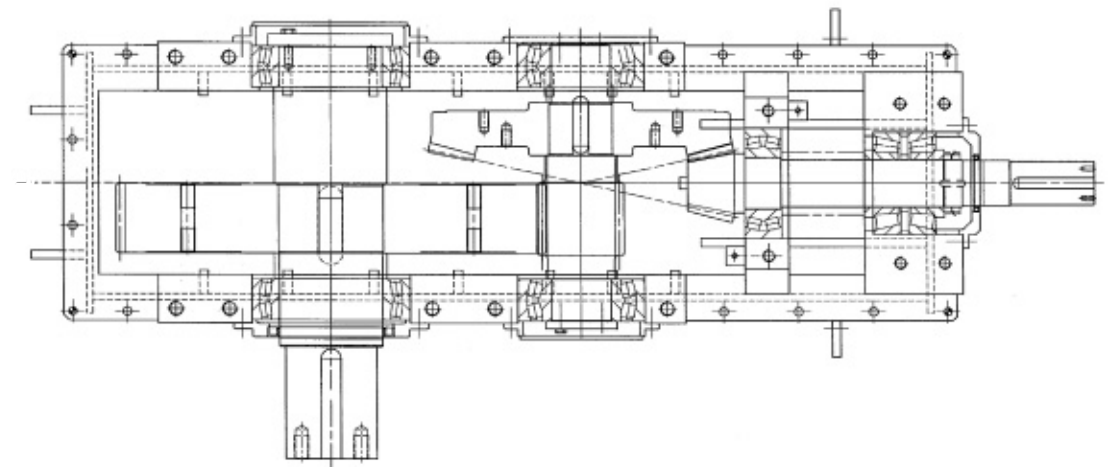
Available accessories include but are not limited to motors, couplings, baseplates, coupling guards, heaters, sensors, oil site glasses and dual grease-purged seals.

Easy Maintenance and Repair

Horizontally split housings, standard bearings and standard seals assure easy maintenance and repair.

Reliable Aftermarket Service

The back cover of this publication provides a complete listing of our global network.

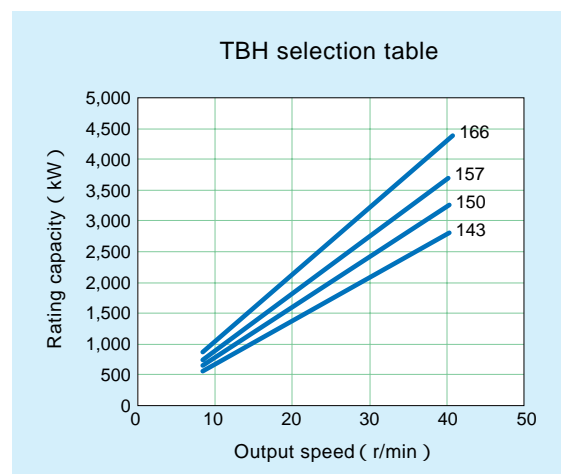
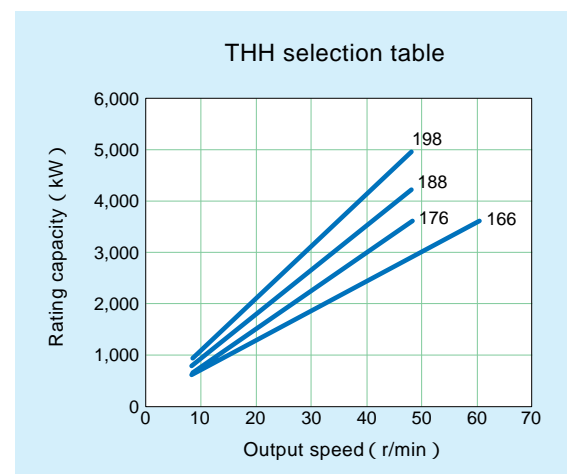
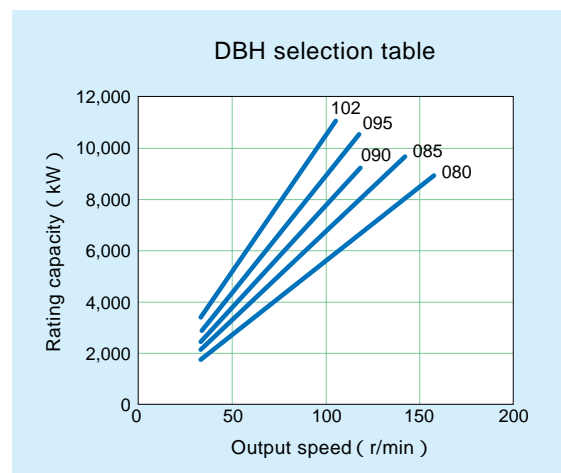
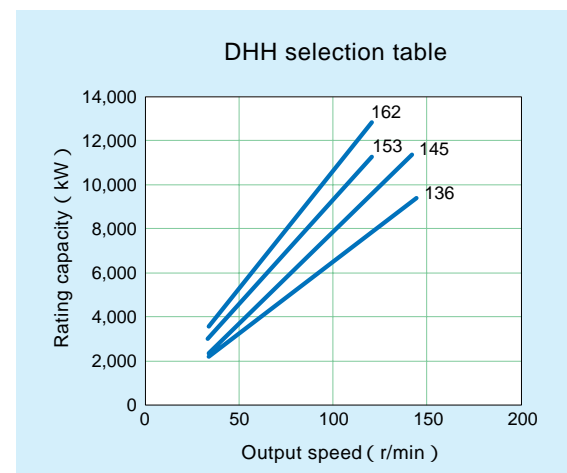


Type Selection

| | | | | | | |
|------------------------------------|--------------------------------------|--------------|--------------|-------------|--------------------------------|----------|
| DBH | 080 | | | | | 8 |
| Series | Size (approx.torque in kNm) | | | | Nominal reduction ratio | |
| D : 2 stage T : 3 stage | DHH | THH | DBH | TBH | 8 | 20 |
| HH : Parallel Shaft, Horizontal | 136 (740) | 166 (620) | 080 (550) | 143 (550) | 9 | 22.4 |
| BH : Right Angle, Horizontal | 145 (900) | 176 (740) | 085 (650) | 150 (650) | 10 | 25 |
| | 153 (1000) | 188 (900) | 090 (750) | 157 (750) | 11.2 | 28 |
| | 162 (1100) | 198 (1000) | 095 (850) | 166 (850) | 12.5 | 31.5 |
| | | | 102 (1000) | | 14 | 35.5 |
| | | | | | 16 | 40 |
| | | | | | 18 | 45 |

Selection Tables

Condition : Service Factor 1.0



Vertical axis : Rating capacity (kW)
Horizontal axis : Output speed (r/min)
In case of AGMA Service Factor 1.0

Standard Specifications

| Item | Standard specification | |
|--------------------|---|--|
| Reducer | Gear | Material : Alloy steel |
| | | Heat treatment : Carburized |
| | | Machining : Grinding |
| | Bearing | Type : Antifriction bearing |
| | | Rating life (L10) : 60,000 hours or more (in SF 1.5) |
| | Shaft | Material : Alloy steel |
| Housing | Material : Steel | |
| Seal | Split housing and covers : Sealant | |
| | Output shaft : Dual Grease-purged Seals | |
| | Input shaft : Dual Grease-purged Seals | |
| Lubrication | Oil bath | |
| Ambient conditions | Temperature | - 30 to 60 |
| | Atmosphere | Normal conditions without corrosive or explosive gases |

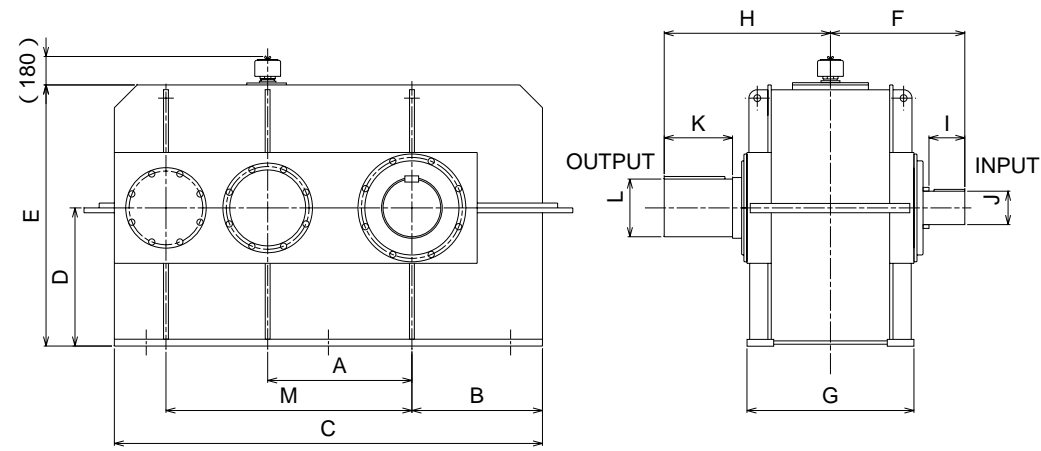
Recommended Lubricants

| Type of oil | JIS K2219 Gear oil Industrial use Class 2 | | | | |
|---------------------|---|---------------------------|---------------------------|---------------------------|---------------------------|
| | ISO VG68 | ISO VG100 | ISO VG150 | ISO VG220 | ISO VG 320 |
| Ambient temperature | - 15 to 10 | | 4 to 40 | | 30 to 60 |
| Idemitsu Kosan | DAPHNE SUPER GEAR OIL 68 | DAPHNE SUPER GEAR OIL 100 | DAPHNE SUPER GEAR OIL 150 | DAPHNE SUPER GEAR OIL 220 | DAPHNE SUPER GEAR OIL 320 |
| Mobil | MOBIL GEAR 600XP68 | MOBIL GEAR 600XP100 | MOBIL GEAR 600XP150 | MOBIL GEAR 600XP220 | MOBIL GEAR 600XP320 |
| Showa Shell | SHELL OMALA 68 | SHELL OMALA 100 | SHELL OMALA 150 | SHELL OMALA 220 | SHELL OMALA 320 |
| Nippon Oil | BONNOC M68 | BONNOC M100 | BONNOC M150 | BONNOC M220 | BONNOC M320 |
| Cosmo Oil | COSMO GEAR SE 68 | COSMO GEAR SE 100 | COSMO GEAR SE 150 | COSMO GEAR SE 220 | COSMO GEAR SE 320 |

Painting Specifications

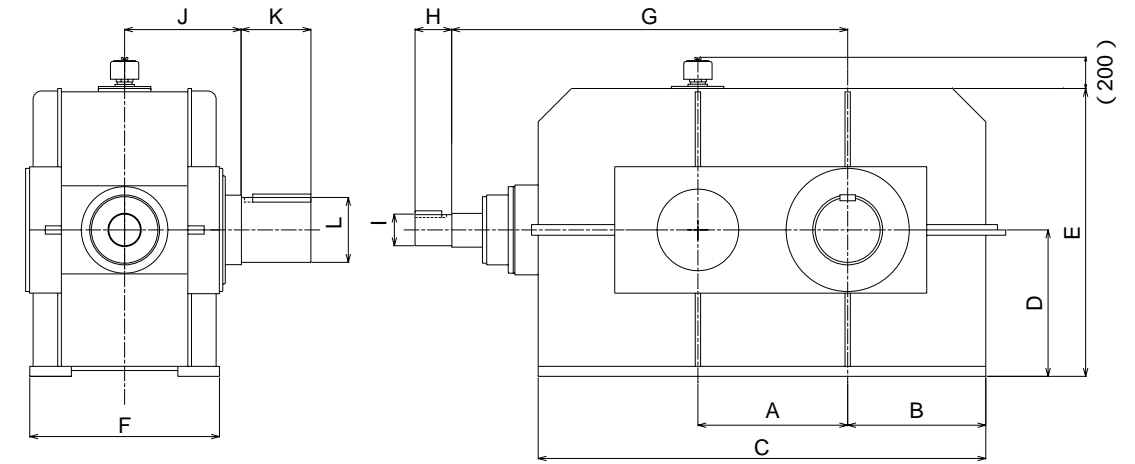
| Painting portion | Type of painting | Painting specification | |
|------------------|------------------|------------------------|--------------|
| | | No. of times | Layer (μm) |
| Casing inside | PTC Primer | 1 | 30 |
| Casing outside | Primer coating | 1 | 30 |
| | Final coating | 1 | 30 |
| | Munsell 2.5G7/12 | | |

TYPE : DHH (Parallel shaft, 2 stage)



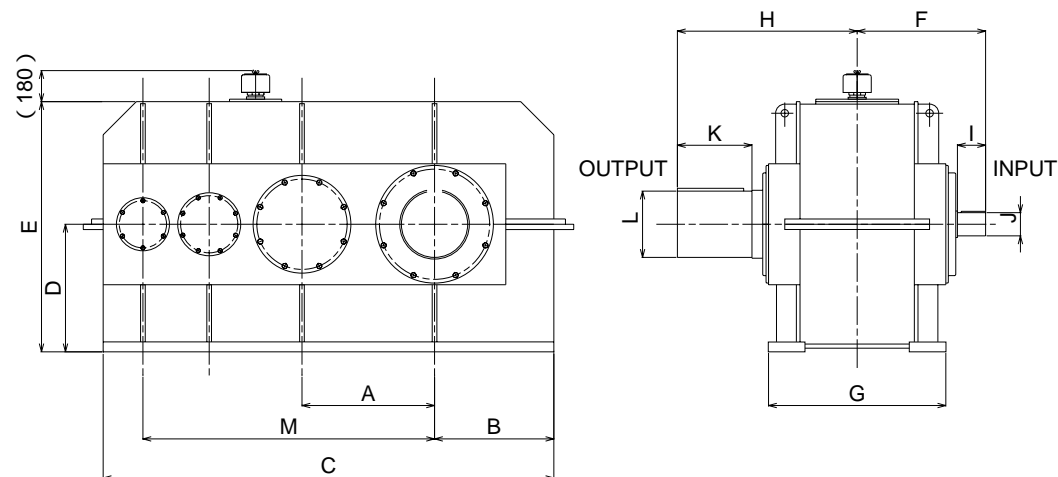
| SIZE | A | B | C | D | E | F | G | H | I | J | K | L | M | WEIGHT (kg) |
|---------|-----|-----|-------|-----|-------|-----|-------|-------|-----|-----|-----|-----|-------|-------------|
| DHH 136 | 800 | 750 | 2,420 | 800 | 1,570 | 830 | 1,040 | 1,020 | 236 | 210 | 400 | 380 | 1,360 | 11,800 |
| DHH 145 | 850 | 790 | 2,560 | 840 | 1,650 | 855 | 1,090 | 1,045 | 236 | 220 | 400 | 400 | 1,450 | 13,700 |
| DHH 153 | 900 | 830 | 2,690 | 880 | 1,730 | 880 | 1,140 | 1,120 | 236 | 230 | 450 | 420 | 1,530 | 15,800 |
| DHH 162 | 950 | 860 | 2,820 | 910 | 1,790 | 915 | 1,210 | 1,155 | 236 | 240 | 450 | 440 | 1,620 | 18,000 |

TYPE : DBH (Right Angle, 2 stage)



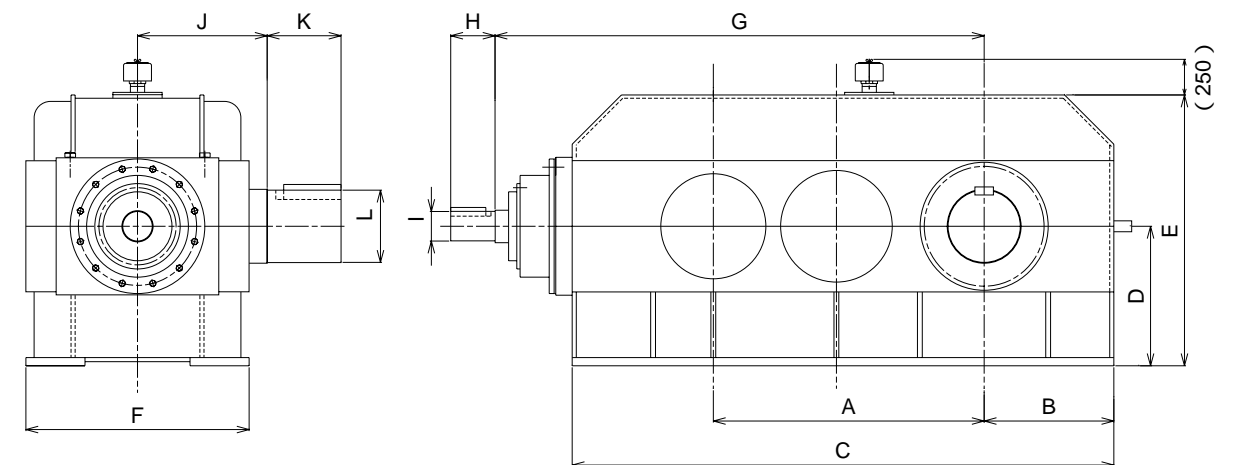
| SIZE | A | B | C | D | E | F | G | H | I | J | K | L | WEIGHT (kg) |
|---------|-------|-----|-------|-------|-------|-------|-------|-----|-----|-------|-----|-----|-------------|
| DBH 080 | 800 | 790 | 2,500 | 900 | 1,750 | 1,100 | 2,700 | 236 | 240 | 1,100 | 355 | 360 | 12,000 |
| DBH 085 | 850 | 830 | 2,600 | 950 | 1,850 | 1,240 | 2,800 | 265 | 250 | 1,200 | 400 | 390 | 13,500 |
| DBH 090 | 900 | 880 | 2,700 | 1,000 | 1,950 | 1,300 | 2,900 | 265 | 260 | 1,200 | 400 | 400 | 16,000 |
| DBH 095 | 950 | 920 | 2,800 | 1,050 | 2,050 | 1,360 | 3,000 | 265 | 270 | 1,250 | 450 | 430 | 19,000 |
| DBH 102 | 1,020 | 980 | 2,900 | 1,100 | 2,150 | 1,460 | 3,100 | 315 | 280 | 1,250 | 450 | 450 | 21,000 |

TYPE : THH (Parallel shaft, 3 stage)



| SIZE | A | B | C | D | E | F | G | H | I | J | K | L | M | WEIGHT (kg) |
|---------|-----|-----|-------|-----|-------|-----|-------|-------|-----|-----|-----|-----|-------|-------------|
| THH 166 | 750 | 685 | 2,570 | 735 | 1,440 | 715 | 1,010 | 1,005 | 140 | 130 | 400 | 370 | 1,655 | 11,100 |
| THH 176 | 800 | 720 | 2,720 | 770 | 1,510 | 775 | 1,070 | 1,085 | 170 | 140 | 450 | 400 | 1,760 | 13,000 |
| THH 188 | 850 | 760 | 2,885 | 860 | 1,620 | 806 | 1,130 | 1,115 | 170 | 150 | 450 | 420 | 1,875 | 15,700 |
| THH 198 | 900 | 790 | 3,020 | 890 | 1,680 | 830 | 1,180 | 1,140 | 170 | 150 | 450 | 440 | 1,980 | 18,000 |

TYPE : TBH (Right Angle, 3 stage)



| SIZE | A | B | C | D | E | F | G | H | I | J | K | L | WEIGHT (kg) |
|---------|-------|-----|-------|-----|-------|-------|-------|-----|-----|-------|-----|-----|-------------|
| TBH 143 | 1,430 | 750 | 2,700 | 850 | 1,650 | 1,040 | 2,700 | 200 | 160 | 1,150 | 400 | 390 | 13,000 |
| TBH 150 | 1,500 | 800 | 2,800 | 900 | 1,740 | 1,100 | 2,800 | 200 | 170 | 1,170 | 400 | 410 | 15,000 |
| TBH 157 | 1,570 | 840 | 2,950 | 940 | 1,830 | 1,120 | 2,950 | 200 | 180 | 1,180 | 450 | 430 | 18,000 |
| TBH 166 | 1,660 | 870 | 3,100 | 970 | 1,890 | 1,200 | 3,100 | 200 | 190 | 1,250 | 450 | 460 | 22,000 |